



Since 1858 millions of customers have chosen Lechler paints in the Industry, Refinish, Decorative, Yachting and Habitat sectors identified by the five brands of the group.

After more than 150 years, approximately 600 people contribute their abilities and passion to the work of research, development, production and marketing of paint products and the training of users.

In Europe the head office of Lechler is located in Como while the production sites are in Como, Seregno and Foligno. There are the four branches in Manchester (UK), Grenoble (France), Barcelona (Spain) and Kassel (Germany). In Brazil the company operates in the production site and branch of Parai (Rio Grande do Sul) and the branches of Rio Negrinho (Santa Catarina), Ubá (Minas Gerais) and Paulínia (São Paulo).

Lechler's products are currently distributed in over 65 countries worldwide.

Lechler Tech is a reference brand for industrial companies who want to use coatings to add competitive value to their products in terms of aesthetics, strength and durability:
Wherever paint matters!





Color Design is the Lechler's new concept that combines chemical development with the evolution of the language of colour.

Lechler since 1858

For over a century, we have been promoting the culture of colour. We know the language, and the neologisms; we study the trends and future scenarios. But above all, we own the technology to produce all these things. Finally, the "colour idea" has become a determining element in the design of a space, room or object.

...and we won't stop colouring the world.

The Color Design Project by Lechler, organized in partnership with the industrial designer Francesca Valan, provides indications, suggestions and technical information to make choosing colour and finishes easier.

Lechler Color Design projects: Color Trainer by Chrèon for Decorative, Color Trend Consultant by Lechler Tech for Industry and Color Trend Habitat by IVE for Habitat.



It's a Lechler Trade Mark



Color Trend Consultant

Color Trend Consultant is the project that presents new finishes with trendy colours for industrial products.

Wherever paint matters colour is an important added value that can enhance the precious features of an object, endowing it with the capacity to arouse emotion.

Color Trend Consultant is a must for industries, decision makers, style centres and designers who design objects that will be marketed in the short and medium term.

Golden Shades Timeline

Warm metals have been the actual protagonists of the past ten years.

Having replaced metallic grey and the cold hues of the Minimal style, they are the symbols of the latest Glam trend.

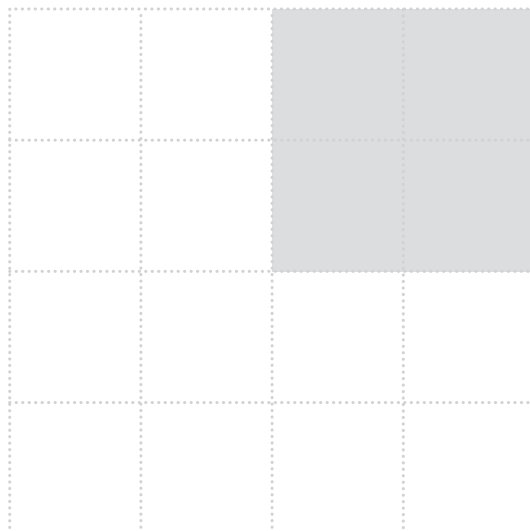
Satin finish gold, matt titanium and copper nuances recall the glamour of the bygone '50s, and characterise objects and spaces with their warm tactile metal surfaces.

The collection presents a patinated range of titanium, gold and copper hues that perfectly merge with wood and the natural materials demanded by the new Glam trend.



NATURAL

GLAM



NATURAL: Language characterised by woods and stone materials in their natural finishes.

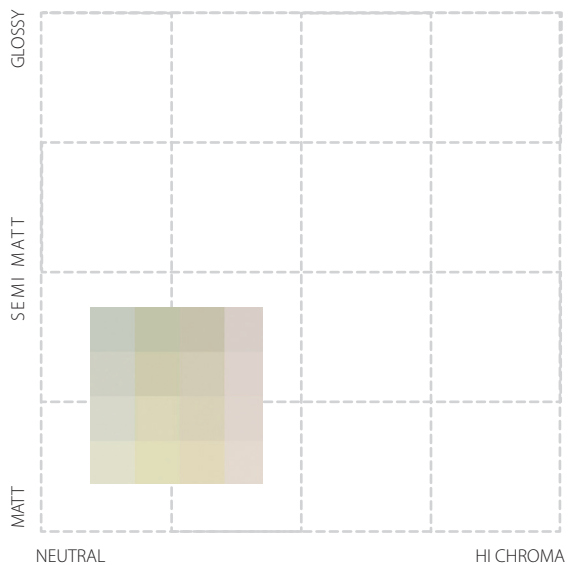
MINIMAL: Language characterised by geometric shapes and neutral colours.

CHROMATIC: Language characterised by the usage of colour as a leading feature.

GLAM: Language characterised by the usage of classic shapes and sophisticated finishes.

MINIMAL

CHROMATIC



Golden Shades Colour Card

The range unfolds in three hues:
TITANIUM, GOLD and COPPER
with a matt and semi-matt finish.

Every hue is proposed in three degrees
of lightness - Light, Medium and
Shadow - and three gloss levels:
10, 30 and 40 gloss.

The new colour samples are presented in two formats,
round plastic drop-shaped chips and steel plates
to assess chromatic behaviour on objects produced
in different materials and shapes.

The range has been studied for *mono-metal* creations
in various degrees of lightness, or for *multi-metals*,
which combine several metals.

The pages below provide some examples
of use on significant contemporary design
products manufactured with various materials.

We thank all the companies that partnered us
in this initiative.

169
PALE TITANIUM
SEMI MATT
10 gloss



175
MEDIUM TITANIUM
SATIN
30 gloss

172
MEDIUM TITANIUM
SEMI MATT
10 gloss



178
SHADOW TITANIUM
SEMI GLOSSY
40 gloss

170
PALE GOLD
SEMI MATT
10 gloss



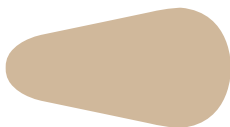
176
MEDIUM GOLD
SATIN
30 gloss

173
MEDIUM GOLD
SEMI MATT
10 gloss



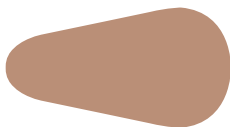
179
SHADOW GOLD
SEMI GLOSSY
40 gloss

171
PALE COPPER
SEMI MATT
10 gloss



177
MEDIUM COPPER
SATIN
30 gloss

174
MEDIUM COPPER
SEMI MATT
10 gloss



180
SHADOW COPPER
SEMI GLOSSY
40 gloss

Color Proposal: colour combinations

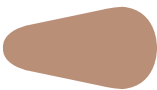
169
PALE TITANIUM
SEMI MATT



173
MEDIUM GOLD
SEMI MATT



174
MEDIUM
COPPER
SEMI MATT



176
MEDIUM
GOLD SATIN



177
MEDIUM
COPPER SATIN



178
SHADOW TITANIUM
SEMI GLOSSY



173
MEDIUM
GOLD
SEMI MATT



178
SHADOW
TITANIUM
SEMI GLOSSY



179
SHADOW GOLD
SEMI GLOSSY



180
SHADOW
COPPER SEMI
GLOSSY



169
PALE TITANIUM
SEMI MATT



172
MEDIUM
TITANIUM
SEMI MATT



173
MEDIUM
GOLD
SEMI MATT



175
MEDIUM
TITANIUM
SATIN



176
MEDIUM
GOLD SATIN



177
MEDIUM
COPPER
SATIN



170
PALE GOLD
SEMI MATT



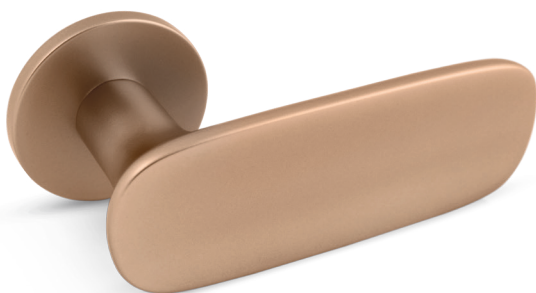
174
MEDIUM
COPPER
SEMI MATT



172
MEDIUM
TITANIUM
SEMI MATT



RADIAL
Manufacturer: OLIVARI
Designer: RODOLFO DORDONI
Material: BRASS



CONCA
Manufacturer: OLIVARI
Designer: PATRICIA URQUIOLA
Material: BRASS

RADIAL CONCA PITAGORA

GOLDEN SHADES have a subtle sheen that perfectly adapts to the soft shapes of handles.

The copper and gold *mono-metal* design was used for the whole soft shapes presented by the models Radial and Conca.

An innovative, provocative *multi-metal* design was chosen to highlight the broken lines of the model Pitagora.

The handle is a crucial furnishing accessory in the Glam trend. It also opens the visual path of space and confirms the style.

*These brass objects were coated with the transparent adhesion primer **CLEAR ACRYLIC FILLER L0040395**, the intermediate primer **MULTIPLAST PRIMER (LS920)** and the slightly tinted basecoat **SPARKLING (L0660009)**. The matt **L0960204** or semi-matt clearcoat **L0960598** conveys a high resistance to scratches and detergents.*

169
PALE TITANIUM
SEMI MATT



172
MEDIUM TITANIUM
SEMI MATT



173
MEDIUM GOLD
SEMI MATT



175
MEDIUM TITANIUM
SATIN



176
MEDIUM GOLD
SATIN



177
MEDIUM COPPER
SATIN





PITAGORA
Manufacturer: OLIVARI
Designer: GIORGETTO GIUGIARO
Material: BRASS

ELETTA
Manufacturer: DE'LONGHI
Designer: FRANCESCA CESTER
Material: ABS



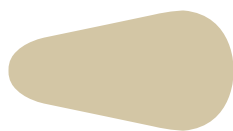
ELETTA

The finish strongly characterises this coffee machine, which remains a technical product that, however, flaunts the Glam style.

The colour combination underscores the design of the shapes without altering it. Functional parts maintain their technical hues, while the central panel and dispenser unit become the visual protagonists of the product.

*This ABS object was coated with the adhesion primer **MULTIPLAST PRIMER (LS920)**, the slightly tinted basecoat **SPARKLING (L0660009)** and the matt clearcoat **L0960204** which conveys the high surface hardness and resistance demanded by domestic use.*

170
PALE GOLD
SEMI MATT







BOMBINO
Manufacturer: SMEG
Design: SMEG
Material: METAL

BOMBINO

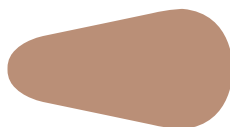
Warm metals evoke the 1950s and are highly consistent with the *vintage* aesthetics of this product.

The mellow reflections of MEDIUM TITANIUM SEMI MATT and MEDIUM COPPER SEMI MATT give prominence to the rounded shapes of the refrigerator Bombino. Its homogeneous and discrete surfaces communicate a strong and precise identity.

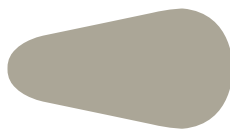
*The cycle includes the primer **1K FAST PRIMER (LS100)** that ensures adhesion to the metal substrate, the tinted basecoat **SPARKLING (L0660009)**, and the matt clearcoat **L0960204**, which ensures the utmost protection.*



174
MEDIUM COPPER
SEMI MATT



172
MEDIUM TITANIUM
SEMI MATT



S M E G



LOU LOU

The seductive reflections of GOLDEN SHADES enhance the conical volumes of these typically *outdoor* products, enhancing tactile pleasure and attractive charm, preparing them to characterise contemporary spaces.

They are especially appreciated in the contract sector, namely for luxury hotels, cafés and restaurants. . .

The chromatic pattern inverts the light and dark effect of the occasional tables Lou Lou: *pale* and *medium* solutions were used for tops exposed to light, while '*shadows*' solutions were applied on bases that remained in the shade.

The collection has been conceived for use with the three metals to create *multi-metal* designs, such as Lou Lou vases by Serralunga presented in *Titanium*, *Gold* and *Copper*.

*After cleaning and flame treatment, the vases are coated with the special adhesion primer **MULTIPLAST PRIMER (LS920)**. Colour is conveyed by the slightly tinted basecoat **SPARKLING (L0660009)**, while the various matt (**L0960204**) and semi-matt (**L0960598**) clearcoats enhance the final aesthetic result and protect the substrate.*

By using special high performance products, objects can even be placed outdoors where both colour and aesthetic features will remain unaltered in the course of time.





LOU LOU
Manufacturer: SERRALUNGA
Designer: RAFFAELLA MANGIAROTTI
Material: LAMINATE AND LLDPE
(LINEAR LOW DENSITY POLYETHYLENE)



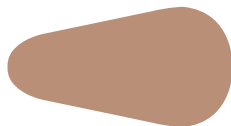
169
PALE TITANIUM
SEMI MATT



173
MEDIUM GOLD
SEMI MATT



174
MEDIUM COPPER
SEMI MATT



176
MEDIUM GOLD
SATIN



177
MEDIUM
COPPER SATIN



178
SHADOW TITANIUM
SEMI GLOSSY



MICROSOL

SHADOW TITANIUM SEMI GLOSSY and MEDIUM GOLD SATIN endow technical products with a stylish touch.

These wall-mounting elements perfectly merge with the amber, ochre or golden hues of the ultimate Glam settings.

The object is produced in plastic and metal.
The monochromatic pattern combines the shape and geometrical lines of the volume.

*For these objects, the monochromatic solution can be applied on both substrates by using **MULTIPLAST PRIMER (LS920)** for the plastic portion and by the adhesion primer **1K FAST PRIMER (LS100)** for metal. The cycle is completed with the tinted basecoat **SPARKLING (L0660009)**, and the semi-matt clearcoat **L0960598**, which ensures excellent resistance to heat and abrasion.*



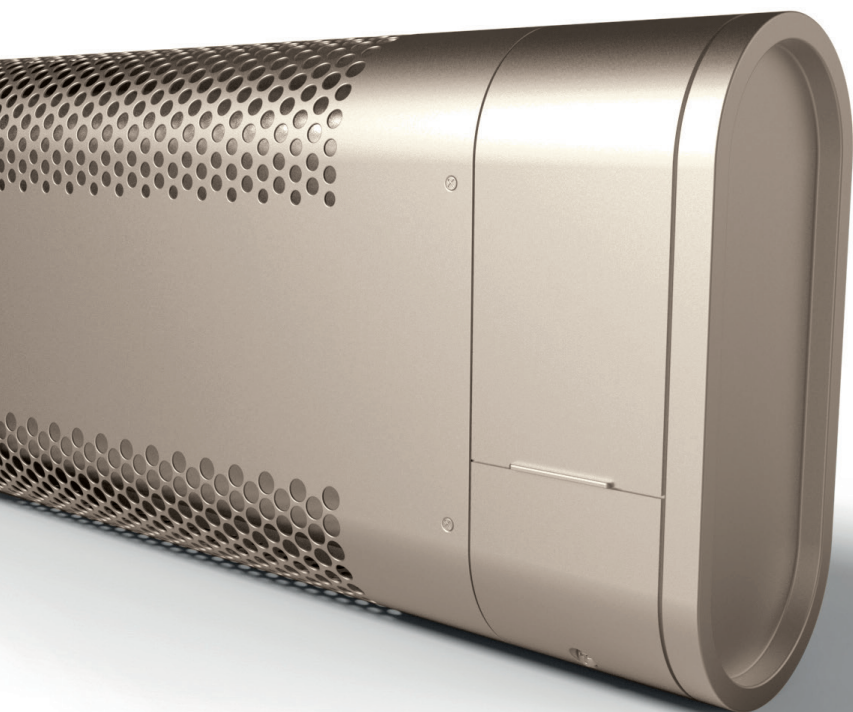
MICROSOL
Manufacturer: VORTICE
Designer: F.TRABUCCO & ASS.
Material: ABS AND METAL

173
MEDIUM GOLD
SEMI MATT



178
SHADOW TITANIUM
SEMI GLOSSY







FEDERAL ECHOS

Lighting fixtures are strategic furnishing elements. They confirm the chromatic key that, in Glam environments, focuses on warm, moderately dark hues.

Colours in the SHADOW GOLD SEMI GLOSSY and SHADOW COPPER SEMI GLOSSY collection reinterpret the technical identity of these spotlights. Cylindrical volumes have become softer as a result of the warm hues and mellow reflections.

*After cleaning, spotlights are coated with the special adhesion primer **1K FAST PRIMER (LS100)**, while colour is conveyed by the slightly tinted single-layer semi-glossy finish **ARISTAR CHROMO LIGHT (L0940603)**.*

179
SHADOW GOLD
SEMI GLOSSY

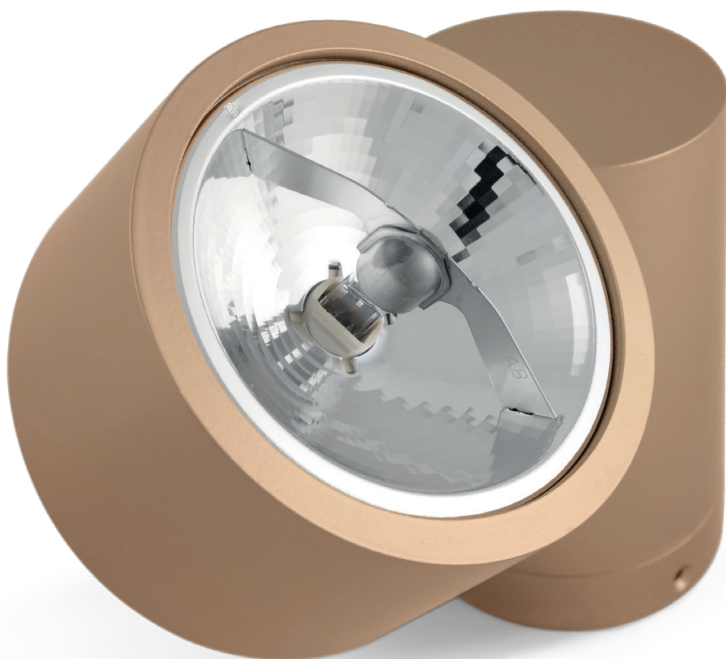


180
SHADOW COPPER
SEMI GLOSSY





FEDERAL
Manufacturer: TARGETTI
Designer: ROBERTO GRAZIANI
Material: METAL



ECHOS
Manufacturer: TARGETTI
Designer: ROBERTO GRAZIANI
Material: METAL

LECHLER S.P.A.

22100 Como - Italia
Via Cecilio, 17
Tel. +39.031 586 111
Fax +39.031 586 206
info@lechler.eu

Author:
Francesca Valan
Graphic Project:
Creative & design department
Lechler Spa

97946-04/2017

LECHLER COATINGS LTD.

Unit 42, Pochin Way - Middlewich
Cheshire CW10 0GY - UK
Tel. +44 (0) 1606 738.600
Fax +44 (0) 1606 738.517
lechler.uk@lechler.eu

LECHLER COATINGS FRANCE S.A.R.L.

Parc d'activité Actipole
296, rue de la Béalière
F-38113 Veurey-Voroize - France
Tel. +33(0) 4 76.53.71.81
Fax +33(0) 4 76.53.71.89
lechler.france@lechler.eu

LECHLER COATINGS IBERICA, S.L.

Calle Primer de Maig, 25-27
08908 L'Hospitalet de Llobregat
Barcelona - España
Tel. +34 93.264.93.20
Fax +34 93.264.93.21
lechler.iberica@lechler.eu

LECHLER COATINGS GMBH

Lilienthalstraße 3 (Halle 12)
D-34123 Kassel - Deutschland
Tel. +49 (0) 561 988.380
Fax +49 (0) 561 988.38.38
lechler.de@lechler.eu

LECHLER DO BRASIL S.A.

Rua 2, Distrito Industrial IV n.10
Bairro: São Lucas CEP: 95360-000
Parai (Rio Grande do Sul) - Brasil
Tel./Fax +55 54 3477 1882/2107
lechlerdobrasil@lechler.com.br

www.lechler.eu

